

# Product Data Sheet

## OVERVIEW

Simulate your ABB/Bailey Net 90/ Infi 90/Harmony DCS on a PC. Run binary controller CFG files as-is, without a need to change or translate them. Connect an ABB, Previs or third party operators console to an emulated CIU. Use external process IO, or simulated IO, or map to internal data. Use Composer<sup>IT</sup>, WinCAD or other EWS software.

ABB/Bailey DCS function at a fraction of the cost !!

## APPLICATIONS

**OTS Version** - Realistic Operator Training Simulator with the *actual* controller files from your DCS, the *same* operator console as in the MCR, & your choice of process simulation.

**Composer Companion Version** - Test your control logic before using it.

**HMI Test Version** - Test operators console before MCR installation.

## ▶ Bailey DCS Simulator

### BENEFITS

Bailey DCS function at a fraction of the cost !  
Re-use existing simulator hardware in main DCS and avoid buying more.

Connect your existing operator console without change. Costs less and works just like in the MCR. Converted console available too.

No need to translate or change CAD or CFG files. Maintain logic easily with Composer<sup>IT</sup> or WinCAD EWS tools.

Change operating state in seconds by simply restoring a state file (e.g. change from 100MW state to 300MW state in < 10 sec)

Free demo version available.

### FEATURES

Supports 159+ most common Function Codes  
To 100+ controllers and 8 CIU on a single PC

Simulates serial and SCSI CIU (INICT03)

Supports most native ABB operator consoles

Supports Previs consoles via TCP/IP

Support Microsoft Windows XP, 2003  
(Windows 7 & W2008 support available soon)

Tune specifications from console or EWS

ABB Batch-90 Support (pending early 2011)

Connect external process simulator or make internal process simulation

Configure DCS to load CFG files at startup

Save & restore DCS process state in seconds

Watch or Force controller block addresses.

Execute from 0.1 X to 10 X real time speeds



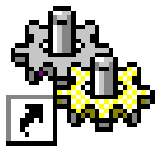
P R E V I S E I N C .

Phone (416) 414-9193

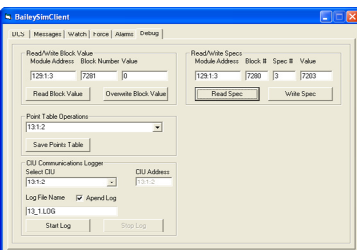
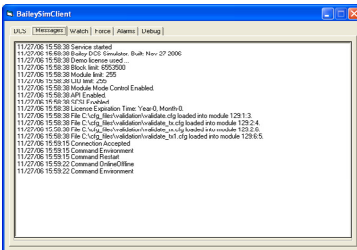
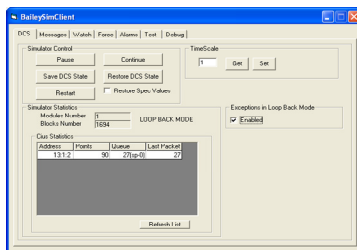
E-mail: [support@previs.com](mailto:support@previs.com)  
[www.previs.com](http://www.previs.com)

RUNS AS SERVICE

CLIENT FUNCTION



Services



# Bailey DCS Simulator

## SPECIFICATIONS

<b>FUNCTION CODE SUPPORT</b>	Supports 159+ of the most commonly used function codes. Additional Function Code support being added constantly.
<b>ABB BATCH-90 and UDF</b>	Supported, and provides visual debugger tool
<b>CONTROLLER SUPPORT</b>	Simulates to 500+ controllers simultaneously. Supports MFC0x, MFP0x, BRCx00 (and older AMM, LMM, COM).
<b>IO SUPPORT</b>	Supports connection of external process simulator via API Read/write over 10,000 IO many times a second. Supports OPC Data Access v2.0 as both client and server. Supports IO Wraparound to connect simulator inputs to outputs.
<b>CIU SUPPORT</b>	Simulates CIU04(serial), INICT03 (serial), INICT03(SCSI) TCP/IP CIU for Previs operator consoles & OPC server Supports to 8 CIU channels simultaneously Protocol includes exceptions, alarms, tuning, polling, controls +
<b>CONSOLE SUPPORT</b>	Conductor NT, OIS4x, 800xA PPA, PPB, and other ABB consoles Up to 8 consoles connected simultaneously
<b>THIRD PARTY CONSOLES</b>	Previs, Wonderware, CiTech, DeltaV, Honeywell & others
<b>EWS TOOLS SUPPORT</b>	Supports ABB Composer <sup>IT</sup> , WinCAD, and more. Monitor CAD sheets live; Tune specifications; Load logic Supports EWS and console operations simultaneously.
<b>OS SUPPORT</b>	Windows XP/2003/2008/Win7Pro(32). Executes as service
<b>SIMULATOR CLIENT FUNCTIONS</b>	PAUSE, CONTINUE, SAVE/RESTORE STATE (To named file) Read block value; Read/Write tunable specifications and Field IO Simulator health monitoring and troubleshooting Select speed from 0.1X to 10 X; Watch and Force block list
<b>USERS MANUAL</b>	Provided in WORD DOC file format
<b>SYSTEM REQUIREMENTS</b>	PC with XP/Win7Pro(32) for 50 controllers/100,000 blocks Call for PC platform guidance > 50 controllers/100,000 blocks
<b>PERFORMANCE BENCHMARK 1</b>	26 controllers , 71K blocks, 1 SCSI CIU, 1 RS-232 CIU 3.2Ghz Intel CPU, Windows XP, <3% CPU load
<b>PERFORMANCE BENCHMARK 2</b>	95 controllers, 170K blocks, 2 SCSI CIU (28k tags), 1 RS-232CIU 3.6Ghz Intel CPU, Windows XP, <6% CPU load.
<b>PERFORMANCE BENCHMARK 3</b>	100 ctrl, 400K blocks, 5000+ UDF blocks/second at real time on 8 core 3+ GHz Intel CPU, XP <20% total CPU load.
<b>USB LICENSE KEY</b>	Configures # of Controllers, Blocks, CIU, Module Mode Control, API and SCSI Enable, License Period
<b>EXTENSIVE API</b>	Experienced developers may connect external processes

## ORDERING INFORMATION

<b>BSS-BASE</b>	Base Version, licensed for 1 Controller/10,000 blocks/1 CIU. All options enabled. Perpetual license. Includes 90-day warranty and manuals.
<b>BSS-CONTROLLER</b>	Add 1 controller & 10,000 blocks to BSE-Base, to 500+ Controllers
<b>BSS-CIU</b>	Add 1 CIU to BSE-Base, to 8 CIU maximum (Call for SCSI details).
<b>BSS-ESS</b>	Bailey DCS Software Simulator, Extended Service Agreement, 1 Year



PREVISE INC.

Phone (416) 414-9193

E-mail: [support@previs.com](mailto:support@previs.com)  
[www.previs.com](http://www.previs.com)